

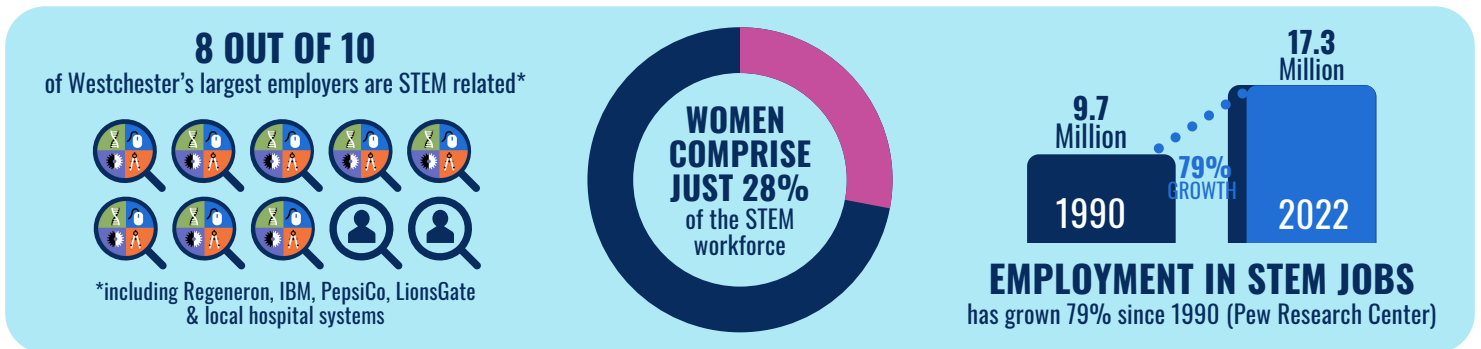
WHAT IS STEM EQUITY?



The STEM Alliance is creating high quality STEM enrichment programs available on an equal access basis. Out-of-school classes inspire kids to pursue STEM education which benefits their career prospects and the advancement of our communities.

THE NEED

The United States has a severe shortage of STEM-skilled workers, making STEM skills a ladder of opportunity, especially for underserved and economically fragile populations. But acquiring STEM skills is only part of the goal as representation matters for innovation as well. The need for diversity in STEM fields is critical in areas like healthcare, technology design and transportation to serve the needs of all genders and ethnicities.



OUR SOLUTION

The STEM Alliance specializes in delivering high quality after-school STEM education programs. We adhere to Next Generation Science Standards, so our curriculum meets best practice guidelines across Approach, Content, Pedagogy, Implementation, and Innovation. Our STEM Education & Equity fund allows us to partner with organizations that reach underserved populations, bringing our programs to their sites free of charge or at a reduced rate. Programs include:

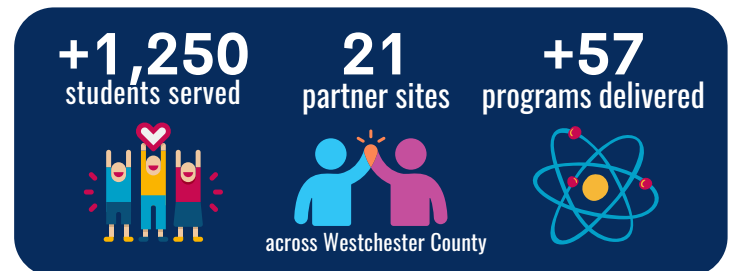
- Curricula for Pre-K through 12th grade in a broad range of STEM topics
- *STEM-tastic*, an annual festival of hands-on STEM learning, free and open to the public
- *Tinkering Nights*: family programs to connect parents and kids to project-based STEM activities
- *Girls Do STEM*: 10-hour workshops for girls, each with a different STEM focus
- Competitive robotics teams and robotics workshops
- *STEM Sails* on the Long Island Sound with partner SoundWaters



Contact Polly Lagana: plagana@thestemalliance.org
www.theSTEMalliance.org

OUR IMPACT

In our 2021-2022 Program Year:



To meet demand, we have planned significant growth:

- Double the number of children served to 2,000+ annually with 120 programs
- Serve 1,000 additional participants by bringing back our annual hands-on festival, *STEM-tastic*
- Double the number of partner organizations for STEM programming including 80% of programming focused on low income clients
- Invest heavily in our STEM Alliance staffing